

Day Use Conservation Areas

Big Bend
21239 Big Bend Rd, Wardsville

Big "O"
7034 Highway 77, Main St, Comber

CM Wilson
21799 Fargo Rd, Charing Cross

Delaware
2695 Gideon Dr, Delaware

Dutton Dunwich
14494 Coyne Rd, Dutton

EM Warwick
26135 Warwick Line, West Lorne

Lighthouse
19028 Harbour Dr, Lighthouse Cove

Longwoods Road
8348 Longwoods Rd, Mount Brydges

McCauchy Pond
17978 Erieau Rd, Erieau

Merlin
128 William St, Merlin

Mill Stream
22035 Gibson Rd, Mount Brydges

Mosa Forest (Skunk's Misery)
962 Centreville Dr, Newbury

Rondeau Bay Marshes
92 Wellington St, Shrewsbury

Rowson's Tilbury West
15172 South Middle Rd, Comber

Sharon Creek
4212 Springer Rd, Delaware

Sinclair's Bush
10671 Sinclair's Line, Blenheim

Two Creeks
21638 Wheatley Rd, Wheatley

Walter Devereux
13016 McLarty Line, Ridgetown

Camping

Big Bend (family, seasonal, group)
21239 Big Bend Rd, Wardsville

CM Wilson (family, seasonal, group)
21799 Fargo Rd, Charing Cross

EM Warwick (group)
26135 Warwick Line, West Lorne

Longwoods Road (group)
8348 Longwoods Rd, Mount Brydges

Please contact us if you require information in another format.

Facility Rentals

Big Bend (pavilion)
21239 Big Bend Rd, Wardsville

CM Wilson (historic barn pavilion)
21799 Fargo Rd, Charing Cross

EM Warwick (community hall/cabins)
26135 Warwick Line, West Lorne

Longwoods Road (pavilion)
8348 Longwoods Rd, Mount Brydges

Two Creeks (pavilion)
21638 Wheatley Rd, Wheatley



Relax, Refresh, Return.

**Explore LTVCA
CONSERVATION AREAS**



2022

Contact Us



100 Thames Street
Chatham, Ontario



(519)-354-7310



www.ltvca.ca



About the Lower Thames Valley Conservation Authority

The Lower Thames Valley Conservation Authority (LTVCA) sits within one of the largest watershed areas of Southwestern Ontario. It is a primary focus of LTVCA to increase the conservation, restoration, and management of our surrounding natural resources. This is achieved with cooperation of many community partners, and acquisition of environmentally significant areas like wetlands, forests, and tallgrass prairies. We work directly with private landowners and provide technical advice and incentive dollars to naturally restore our watershed.

"Having paddled the Thames River, and currently Chair of the LTVCA, I am always learning new and unique things about this diverse watershed that we live in. This guide is just a glimpse as to what is out there. I encourage you to visit these properties and support the businesses in this brochure."
Chatham-Kent Councillor and LTVCA Chair - Trevor Thompson



Chatham-Kent

For over 60 years, the LTVCA has promoted, conserved and managed our environment. Now more than ever before we recognize the value of visiting Conservation Areas (CA's) for our mental and physical health. Our local Conservation Areas offer a perfect venue for hiking, biking or just spending time with family and friends. From great vistas at McGeachy Pond in Eriau to the beautiful example of a Carolinian Forest at Walter Devereux CA, there is much to explore in our watershed. With your support we can all make a difference and assist the LTVCA with achieving their goals.

Please visit these Conservation Areas and when you do, be sure to leave only footprints!

Yours in conservation,

Mayor Darrin Canniff

Lower Thames Valley Conservation Authority acknowledges that the land on which it operates is the traditional territories of the Haudenosaunee (Mohawk, Oneida, Onondaga, Cayuga, Seneca, Tuscarora), Anishinaabeg (Ojibway, Chippewa, Odawa, Algonquin, Potawatomi, Mississaugas), Lenape (Delaware, Munsee), Attawandaron (Neutral) and Wendat peoples.

In addition: the First Nations communities in our shared watershed are:

Chippewas of the Thames First Nation
 Oneida Nation of the Thames
 Munsee Delaware Nation
 Delaware Nation at Moraviantown
 Caldwell First Nation

The Thames - A Canadian Heritage River





BIG BEND Conservation Area

Located on the largest meander of the Thames River, Big Bend offers access to this Canadian Heritage River.

Facilities and Services

- day use, boat launch, pavilion rental, fishing, serviced washrooms
- family, group and seasonal camping with online reservations
- canoeing, kayaking access to the Thames River, picnicking, hiking



21239 Big Bend Rd, Wardsville ON

McNaughton's Home Hardware
22789 Hagerty Road
Newbury, ON N0L 1Z0
1 800-265-4259



BIG O Conservation Area

Big O is located on a migratory route for birds and is known as a 'birding hot spot'! Ponds, trails and viewing platforms offer excellent wildlife observation areas with educational signage.

Facilities and Services

- day use, wetlands and Carolinian forest
- picnicking, hiking, fishing, birding
- viewing platform and boardwalk



7034 Highway 77, Main Street, Comber ON

'If you want to see birds,
you must have birds in your heart!'

- John Borroughs

Watch for the annual Big 'O' Birding event in May!





C.M. WILSON Conservation Area

Camp in the Carolinian forest. Enjoy the many facilities C.M. Wilson offers like the man-made pond and rustic barn pavilion for events. It's a place for adventure, down-time, and making memories!

Facilities and Services

- parking fee, day use, facilities rental, serviced washrooms
- family, group and seasonal camping with online reservations
- canoeing (rentals), kayaking, playground, trails, memorial forest, educational programming, picnicking, fishing, hiking



21799 Fargo Road, Charing Cross ON

DYK?

LTVCA has **2** seasonal campgrounds!
C.M. Wilson and **Big Bend** - both with showers,
hydro and water hook ups, plus many
other amenities.

Terry Peck Signs Ltd.
240 William Street South
Chatham, ON N7M 4S9
519 354-2911

C.M. WILSON Conservation Area



**Chatham-Kent & Lambton
Children's Water Festival**
October 4-6, 2022
C.M. Wilson Conservation Area



Wildlife Habitat Management

Interested in creating wildlife habitat or
Improving Water Quality on your
property?

- Ontario Native Tallgrass Prairie Planting, Seed & Plug Sales
- Native Tree and Shrub Planting
- Invasive Species Control (phragmites)
- Prescribed Burning
- Wetland Creation

519-809-5767 or 519-809-5759
ontariounativescape.ca



Community Partner Opportunity PURCHASE AD SPACE IN CONSERVATION AREA GUIDEBOOK 2023 AND SUPPORT THE WATERSHED!

Ad space purchased in our Conservation Area Guidebook goes directly to LTVCA properties and the community. Connect with your patrons as your patrons connect with nature!

See sponsorship level details throughout this Conservation Area Guidebook.

Have questions? Ready to ORDER for 2023? www.ltvca.ca

FASTSIGNS. London *East*
Make Your Statement™

Call Us Today For A Free Consultation/Quote!

(519) 453-0982 fastsignslondon.com



DELAWARE Conservation Area

Delaware remains one of the few natural areas subjected to the natural flooding of the Thames River. Catch a glimpse of one of the largest known Swamp White Oaks still standing in the floodplain.

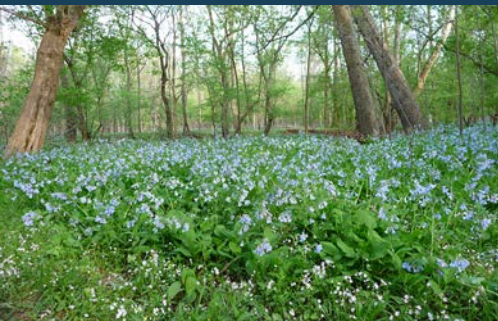
Facilities and Services

- day use, trail, tallgrass prairie, fishing 'hot spot' for pickerel
- canoeing and kayaking access to this Canadian Heritage River



2695 Gideon Drive, Delaware ON





DUTTON DUNWICH

Conservation Area

Dutton Dunwich provides an ideal spot to launch a canoe or kayak on the Thames River. Find the Hackberry 'Heritage Tree', marked with a plaque!

Facilities and Services

- day use, fishing
- canoeing and kayaking access to a Canadian Heritage River!

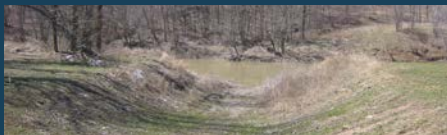
Paddling the Thames River

- conservation area access points at Delaware, Big Bend, Dutton Dunwich, Lighthouse; in Chatham at Thames Grove; also Oneida Nation of the Thames
- 173 km Delaware to Lake St. Clair, average paddling speed 3.5 km/hour
- at 5 hours per day plan approximately 9-11 days to complete this stretch

canoe
maps



14494 Coyne Road, Dutton ON





E.M. WARWICK Conservation Area

Visit E.M. Warwick for Carolinian forests and ravines. Access the north shore of Lake Erie! Check out the cabins and community hall - large group rentals available for your special camp or event!

Facilities and Services

- day use, pavilion with David Morris sculpture, trail to Lake Erie, fishing, birdwatching, picnicking, hiking
- group camping in cabins, each sleep 8; community hall with full kitchen, washroom, shower and dining area, sleeps 8



26135 Warwick Line, West Lorne ON

DYK?

Lake Erie is the shallowest (and warmest) of the five great lakes, with an average depth of 19 metres (62 feet)!

**'GOLD' CONSERVATION AREA GUIDEBOOK
SPONSORSHIP OPPORTUNITIES**

\$ 2000 - ¼ page ad and in social media
Have QUESTIONS? Ready to ORDER for 2023?
www.ltvca.ca



LIGHTHOUSE Conservation Area

This historic site has guided ships entering the Thames River since the 1790's until its decommissioning in 1968. Bring your camera and binoculars to get a better look at the shorebirds found here.

Facilities and Services

- day use, picnicking, 200 year old lighthouse, birdwatching, fishing
- boating, canoeing, kayaking access to Thames River - a Canadian Heritage River and Lake St. Clair

DYK?

October is a great month for Musky fishing in the shallows of Lake St. Clair! Find muskies off-shore from the mouth of the Thames River.



19028 Harbour Drive, Lighthouse Cove ON

**'SILVER' CONSERVATION AREA GUIDEBOOK
SPONSORSHIP OPPORTUNITIES**

\$1000 - ½ page ad

Have QUESTIONS? Ready to ORDER for 2023?

www.ltvca.ca



SKA-NAH-DOHT VILLAGE

LONGWOODS ROAD Conservation Area

Learn about the traditions of the Haudenosaunee people at Ska-Nah-Doht Village. Explore trails, a Museum and Resource Centre and an accessible Carolinian Arboretum and Trail.

Facilities and Services

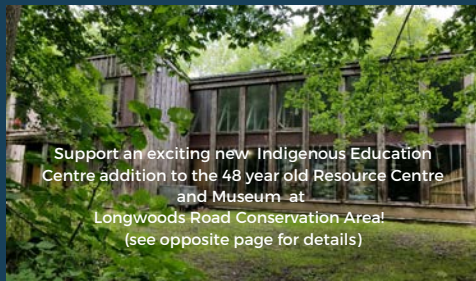
- parking fee, day use, group camping, heritage log cabins, education programming, special events, "Turtle Trail" gift shop
- trails with wetland boardwalks and bridges through Carolinian forests, birdwatching, picnicking, hiking
- facilities rental for large events, serviced washrooms



8348 Longwoods Road, Mount Brydges ON



LONGWOODS ROAD Conservation Area



Support an exciting new Indigenous Education
Centre addition to the 48 year old Resource Centre
and Museum at
Longwoods Road Conservation Area!
(see opposite page for details)



Lower Thames Valley Conservation

FOUNDATION



The Lower Thames Valley Conservation Foundation works in partnership with the Lower Thames Valley Conservation Authority, raising funds to encourage wise management of our renewable natural resources. The Foundation cultivates and enhances all aspects of conservation, helping to provide present and future generations with a safe and healthy environment which includes our natural and cultural heritage resources.

Funding supports education, events, and watershed conservation projects. Its Memorial Forest Program is a collaboration between the McKinlay Funeral Homes Ltd., Tilbury and District Horticultural Society and the LTVCA.

This year marks the exciting beginning to a multi-phased fund-raising campaign in support of a new Indigenous Education Centre - an addition to the Ska-Nah-Doht Museum/Resource Centre at Longwoods Road Conservation Area! Please consider a donation towards this amazing community project!

The Conservation Foundation is an independent, not-for-profit, federally registered charity - Number 898198171 RR0001. Tax receipts are issued for all donations.

Donations can be mailed to:
Lower Thames Valley Conservation Foundation
R.R.#1, 8449 Irish Drive,
Mount Brydges, ON N0L 1W0

Email:
yournature@lowerthamesfoundation.ca
www.lowerthamesfoundation.ca



a 'natural' combination

Laskey's

Since 1976

your local water source **6 Maitland Terrace**
(519) 245-0590 Fax: (519) 245-6453 **Strathroy**
www.laskeysservice.ca

WATER PUMPS & SERVICE
WELL DRILLING & SAND POINTS
GEO THERMAL
GAS HEATING & COOLING
WATER TREATMENT
SOFTENERS, FILTERS, U.V. LIGHTS
ELECTRIC MOTORS

JEFF NETHERCOTT

REAL ESTATE BROKER

WHAT IS YOUR HOME REALLY WORTH?

Contact us today to
DEVELOP A PLAN to reach
your real estate goals!

Phone: 226-445-2388
Email: JeffNethercott@royallepage.ca

ROYAL LEPAGE

THE REGANTEAM

Participate in ALUS

Are you a farmer with marginal or unproductive land?

ALUS helps you add value to your land, reduce erosion, and protect the environment. Over 800 farmers have enrolled 27,000 acres of land in the ALUS program. Join us!

alusmiddlesex.ca

For more information, contact your
local program coordinator:

Peter Middle
alus.middlesex@gmail.com

ALUS Middlesex
3440 Irish Drive, RR #1
Mount Brydges, ON

ALUS
Middlesex

ARROWWOOD FARM

— EST. 1980 —



Be sure to visit us when you are in the neighbourhood, just 10 minutes west of Longwoods Road CA, our 100 acre farm has PRO Blueberries, livestock viewing, catering and special events in an ideal setting for weddings, family gatherings, and corporate retreats.

6460 Riverside Drive, Melbourne, Ontario

(519) 289-0389

www.arrowwoodfarmontario.com

MAGIC of LIGHTS



LONGWOODS CONSERVATION
NOVEMBER 18 – JANUARY 8
MAGICOFLIGHTS.COM/LONDON





MCGEACHY POND Conservation Area

Hike or bike this part of Erieau Trail along the north shore of Lake Erie. McGeachy Pond is a provincially significant wetland with unique bird species like the Dowitcher and aquatic plants like the American Lotus Flower.

Facilities and Services

- day use, fishing docks, canoeing, kayaking, biking
- observation platform, birdwatching, picnicking, hiking



17978 Erieau Road, Erieau ON

DYK?

LTVCA is a charitable organization and can provide income tax receipts for donations of land? Ensure your land is protected for future generations!



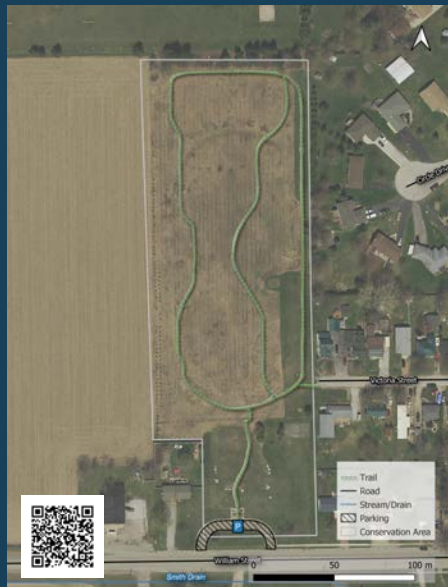


MERLIN Conservation Area

This property was home to the Merlin District High School in the 1950's. Merlin Conservation Area is being re-naturalized. Take a stroll to catch a glimpse of the Bobolink - a species at risk bird.

Facilities and Services

- day use, trail, tallgrass prairie
- hiking, biking, picnicking, birdwatching
- McKinlay Memorial Forest site



128 William Street, Merlin ON

DYK?

LTVCA has protected 703.58 hectares (1,738.584 acres) of conservation lands, some of which are strictly nature preserves. Eighteen properties are public conservation areas!

'BRONZE' CONSERVATION AREA GUIDEBOOK SPONSORSHIP OPPORTUNITIES

\$ 500 - ¼ page ad

Have QUESTIONS? Ready to ORDER for 2023?

www.ltvca.ca

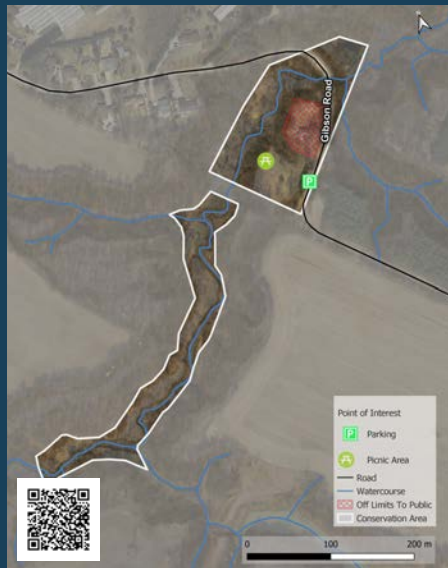


MILL STREAM Conservation Area

Step into nature and find serenity at Mill Stream. As part of a stream corridor, this conservation area offers public enjoyment, while protecting a unique Carolinian forest ravine ecosystem.

Facilities and Services

- day use, picnic shelter
- birdwatching
- Carolinian forest and stream



22035 Gibson Road, Mount Brydges ON

DYK?

LTVCA has an aquatic Species at Risk program working towards protecting and improving fish and mussel habitat in the watershed.

**'SUPPORTER' CONSERVATION AREA GUIDEBOOK
SPONSORSHIP OPPORTUNITIES**

\$ 250 acknowledgement

Have QUESTIONS? Ready to ORDER for 2023?

www.ltvca.ca



MOSA FOREST

Conservation Area (Skunk's Misery)

This is the largest forest south of London with an extensive woodland home to many unique species only found in the Carolinian Life Zone. Skunk's Misery is designated an Area of Natural Scientific Interest. Birders may see Pileated Woodpeckers and Cerulean Warblers that require large interior forest habitat.

Facilities and Services

- day use, trails, hiking or biking, Carolinian forest, wetland
- visit adjoining lands owned by Middlesex County and Thames Talbot Land Trust
- annual butterfly count, a designated Carolinian Canada site

DYK?

LTVCA planted over 1 million trees over the last 10 years!



962 Centreville Drive, Newbury ON





RONDEAU BAY Marshes

Located within the hamlet of Shrewsbury, this Provincially Significant Wetland is a good spot to view and access Rondeau Bay. Watch for Common Night Herons, Great Egrets, Green Herons and much more!

Facilities and Services

- day use, birdwatching, fishing
- canoeing, kayaking in Rondeau Bay
- be aware Rondeau Bay is home to several fish Species at Risk



92 Wellington Street, Shrewsbury ON

DYK?

Launch your canoe or kayak at Rondeau Bay Marshes, and bring your fishing rod for largemouth bass, pike, crappie and more!

Waddick Fuels
15807 Longwoods Road
Bothwell, ON N0P 1C0
519 695-2121



ROWSOM'S TILBURY WEST Conservation Area

Visit part of Canada's Carolinian Forest along the banks of Big Creek. The trail passes by wetlands, mature forest, the creek and open meadows. Big Oaks, Sycamore and Shagbark Hickory trees make this property one of the nicest in Essex County.

Facilities and Services

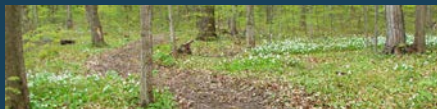
- day use, birdwatching, fishing
- trail, hiking, biking through Carolinian forest
- canoeing, kayaking in Big Creek, memorial forest

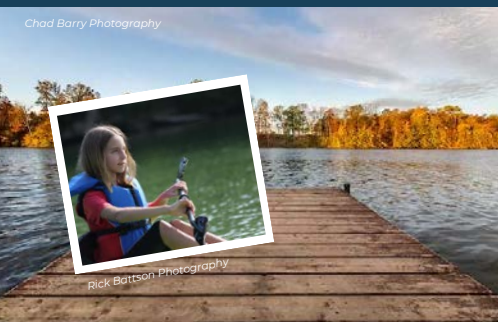


15172 South Middle Road, Comber ON

DYK?

Paying for parking helps keep
conservation areas in good shape!



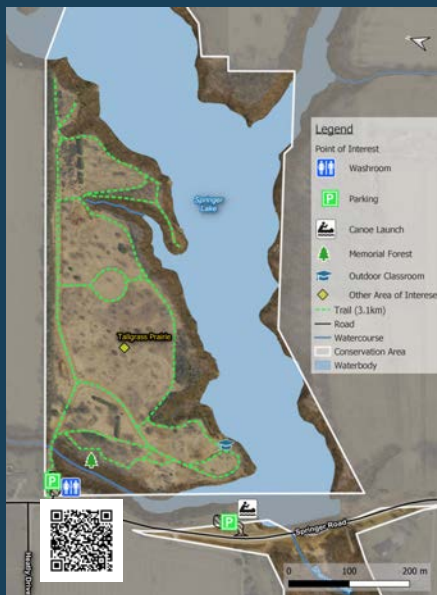


SHARON CREEK Conservation Area

A paddler's paradise and a popular spot for fishing awaits at Sharon Creek. View one of the largest tallgrass prairies in Middlesex County and the lower Thames watershed. Great for birdwatching!

Facilities and Services

- parking fee, day use, amphitheatre, docks, trails, hiking
- canoeing, kayaking, stand-up paddling, only non-power vessels
- Springer Lake reservoir, wetland, memorial forest, picnicking



4212 Springer Road, Delaware ON





SINCLAIR'S BUSH Conservation Area

Traveling east of Blenheim, and down Sinclair's Line is like going back in time. Sinclair's Bush has an abundance of unique species, such as tulip, beech, shagbark hickory, black cherry and pawpaw trees. It is a Carolinian Canada signature site.

Facilities and Services

- day use, trails
- hiking and birdwatching
- Carolinian Forest



10671 Sinclair Line, Blenheim ON

DYK?

The Pawpaw is one of the rarest trees in Canada and grows in the Carolinian Zone of Southern Ontario. The fruit is sweet and known as 'banana of the north'!





TWO CREEKS Conservation Area

If you like hiking or biking, this is the place for you! This property, nestled in Carolinian forest is managed by: *The Wheatley Two Creeks Association* which hosts summer concerts. Check out their website at: www.twocreeks.ca

Facilities and Services

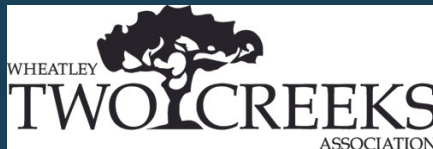
- day use, trails, pavilion, amphitheatre
- birdwatching, biking, hiking, picnicking
- facility rental for large events

DYK?

Wheatley Two Creeks Association is a volunteer community group that works with LTVCA on this area's management and facilities.



21638 Wheatley Road, Wheatley ON





WALTER DEVEREUX Conservation Area

This property is home to a variety of ecosystems, including tallgrass prairie and mature Carolinian forest. Take a self guided tour of the trail and wetland and learn about best management practices for rural properties.

Facilities and Services

- day use, trail, educational signage, wetland
- farm best management practices demonstration site
- birdwatching, hiking



13016 McLarty Line, Ridgetown ON

DYK?

LTVCA has agricultural programs that could help minimize soil erosion - tree planting, native grasslands, wetlands. We can assist with planning and raising funds!



Some Events to Watch For!

- Family Day Snowshoeing
- Moonlight Winter Family Hike (aka Owl Hike)
- March Break Guided One Hour Hikes and Tours
- Big O Birding
- Native Plants Workshop
- Battle of Longwoods
- Twilight Tuesdays
- Learn to Fish
- Artifact Day
- Magic of Lights Longwoods



Check our website for current event details.
Due to COVID-19, programs may be cancelled to comply with provincial health guidelines.



Rustic Country

Event Facility Rentals

Longwoods Road C.M. Wilson E.M. Warwick

Beautiful Wedding Photography Locations

Longwoods Road
C.M. Wilson
Sharon Creek
... and more



LTVCA's Programs & Services

Flood Forecasting assesses climate, water levels and/or flow information to predict the likelihood and severity of flooding and erosion from rivers and lakes.



Watershed and Shoreline Studies, provide a broad perspective of watershed issues to inform planning and regulatory processes.

This offers a balanced program for environmental protection.



Water Quality and Quantity Monitoring in our watershed help us understand current conditions, predict what may happen in the future and assess whether our actions are having a positive effect on the environment.



Maintaining and operating **Flood and Erosion Control Infrastructures** like dams and diversion channels, helps ensure the safety of the public.



Land Use Planning and Regulations direct development away from hazard areas to reduce hardship and loss of property and to protect life. (Section 28 of the Conservation Authorities Act and R.O. 152/06)



Geographic Information Systems (GIS) works closely with watershed partners, providing advanced analysis for programs examining the health of the watershed.



www.ltvca.ca

Land Stewardship programs work with landowners, municipalities and funders, to provide financial incentive and education for the conservation, restoration and sustainable development in the watershed.



Conservation and Ska-Nah-Doht Village Education, provide experiences to enjoy nature and heritage so their inherent value is realized.



Natural Heritage Protection helps secure sensitive species and land.



The management of over 690 hectares, on 31 different **Conservation Lands** across this watershed, provides habitat protection, public recreation, education and event opportunities.



Our Vision

The LTVCA ... for a balanced and healthy watershed.

Our Mission

Leading by example in environmental protection in partnership with the community.

Our Core Values

Respect, integrity, commitment, objectivity, and collaboration.

WE THANK YOU!

LTVCA CONSERVATION AWARDS 2021

Awards for Volunteer Heroes

These awards honour and recognize those in the community for their outstanding volunteer time and services towards conservation activities that educate about or improve our natural environment in the LTVCA watershed and region.



Dr. Chris Ellis - Dept. of Anthropology, Western University - Environmental Education Category
Provided invaluable assistance in the Artifact Display Case Project at Ska-Nah-Doht Museum where cases were given to local schools for education programs.



Barry Frazer - Special Events Category
Improved C-K community over 10+ years, planted prairie plugs along McGregor Creek, helped at CK Paddle & Clean event with the Downtown Rotary Club of Chatham, encourages Lake Morningstar community to plant pollinator friendly gardens.



Andrew McCallum - Board/Committee Work Category
Completed many stewardship projects on his property and is a member of ALUS Elgin Partnership Advisory Committee (PAC).
Andrew also assisted LTVCA staff with Thames River access points.

Visit our website to discover how you can volunteer with us and about the awards nomination process!

LTVCA recognizes award recipients each year at their Annual General Meeting in February.



Environmental Awards

These awards honour and recognize individuals in the LTVCA watershed, for their outstanding work towards environmental stewardship on their own land or in the community.



Robert Glenn - The Glenn's
For a 16 acre restoration legacy project in Cedar Springs and demonstrating exemplary leadership in environmental stewardship on their property.



Joan Durdan-Fitzpatrick (far right)
President & District 33
- Chatham-Kent Retired Teachers of Ontario
For funding tree donations and grant writing.



FAQ'S

What is CONSERVATION?

By definition, conservation is "the wise management and use of natural resources", primarily renewable natural resources including water, soil, vegetation and wildlife.

What is a WATERSHED?

A watershed refers to an area drained by a particular watercourse and its tributaries.

What is a CONSERVATION AUTHORITY?

A Conservation Authority (CA) is an autonomous corporate body established under the CA Act of Ontario. CA's manage renewable natural resources on a watershed basis. Projects are initiated locally by the CA's member municipalities to meet regional (jurisdictional) conservation needs.

What are the POWERS of a CONSERVATION AUTHORITY?

Conservation Authorities study and investigate the watershed and determine a program whereby the natural resources of the watershed may be conserved, restored, developed and managed.

What is the AREA of JURISDICTION OF THE LTVCA ?

LTVCA has jurisdiction over the watersheds of all streams which drain into the Thames River from the village of Delaware to Lake St. Clair. Its southern boundary has jurisdiction over the watersheds of all streams which drain into Lake Erie, from the Talbot Creek watershed in the east to the Two Creeks watershed in the west. This area of jurisdiction covers over 3,275 square kilometres (1,264 square miles) and includes 10 member municipalities.

We thank all of the talented photographers who have shared their images in this Guidebook:
In no particular order - Vicki McKay, Chad Barry and Rick Battson. And of course - our staff!

How can you help

- Volunteer your time
- Purchase an annual conservation area parking pass
- Donate online
- Consider naming LTVCA in your will

Visit our website and join our email newsletter list to keep in touch.

www.ltvca.ca

LTVCA gratefully acknowledges the financial support from our member municipalities:

Chatham-Kent, Lakeshore, Leamington, West Elgin, Southwest Middlesex, Dutton Dunwich, Strathroy-Caradoc, Middlesex Centre, Southwold and the City of London.

Mailing Address

Lower Thames Valley Conservation Authority
100 Thames ST.
Chatham, On N7L 2Y8
email: info@ltvca.ca
www.ltvca.ca
(519) 354-7310

