



Welcome!

Longwoods Road Conservation Area & Ska-Nah-Doht Village and Museum



The Lower Thames Valley Conservation Authority acquired this 63 hectare property in 1964.



Scan this code with your smartphone to visit our website!

Tel: 519-264-2420
Fax: 519-264-1562
Email: info@ltvca.ca
Website: www.ltvca.ca

Accessibility Standards for Customer Service

The Accessibility Standards for Customer Service, Ontario Regulation 429/07, were created under the Accessibility for Ontarians with Disabilities Act, 2005 (AODA).

LTVCA's Policy Statement

The LTVCA is committed to providing optimal customer service to all of its clients and customers. Our goal is to ensure that people with disabilities are provided with an equal opportunity to enjoy the LTVCA programs and services as people without disabilities.

Conservation Area Regulations

A detailed description of Regulations Made Under The Conservation Authorities Act, **Ontario Regulation 115/1990** is made available on Conservation Area premises. This Regulation addresses: prohibited activities, camping permits, day-use permits, animals.

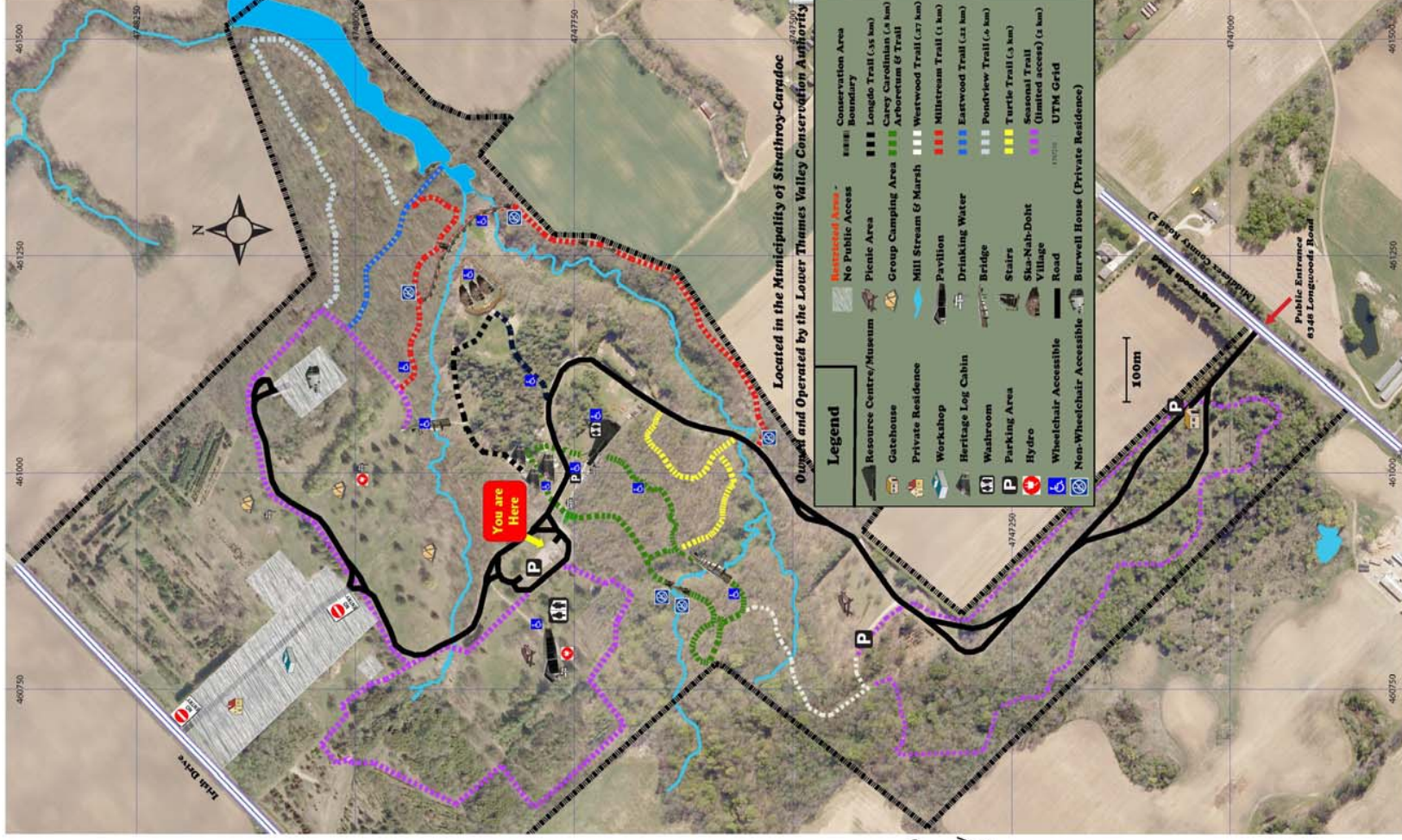


Dogs to be leashed at all times. Pick up after your pet and dispose in trash bins



Support provided by 

The Carey Carolinian Arboretum and Trail kiosk was made possible by generous support from Friends and Family of Dr. Lewis Carey, Green Lane Community Trust and The Lower Thames Valley Conservation Foundation.



Acknowledges the financial assistance of the through the Ontario Ministry of Culture.

When Are We Open?

Conservation Area Grounds:

OPEN 7 days a week
9 a.m. to sunset
May be CLOSED due to weather or road conditions

Ska-Nah-Doht Village, Museum and Resource Centre:

Peak Season (May - October)

Victoria Day to Thanksgiving
OPEN 7 days a week
9 a.m. to 4:30 p.m.
Open Statutory Holidays

Year Round

(Thanksgiving - May)

OPEN Monday - Friday
9 a.m. to 4:30 p.m.
Weekends by group appointment only
Closed Statutory Holidays

At the Resource Centre

- self-guiding Village brochure available in English, French, Spanish, German, Dutch, Italian
- nature and museum displays
- Turtle Trail Gift Shop

Throughout the Park

- accessible trails and buildings
- large pavilion with barbecue and picnic area
- school programs for Conservation and Native studies
- programs to fulfill Scout and Guide badges
- 3 group camping areas



Making a difference... "naturally"