

Working in partnership toward the greening of Chatham-Kent

FALL EDITION

The Greening Partnership is an agreement between The Municipality of Chatham-Kent, the Lower Thames Valley Conservation Authority (LTVCA) and St. Clair Region Conservation Authority (SCRCA), to green our municipality through tree plantings, tallgrass prairie, and wetland restoration.

This issue:

- ◆ Grants
- ◆ Natural Heritage Implementation Strategy
- ◆ Corporate Sponsors
- ◆ Ontario Ministry of Agriculture, Food and Rural Affairs
- ◆ 2014 Greening Partnership Projects
- ◆ In the Community
- ◆ Key Partners
- ◆ Looking Ahead to 2015

GRANTS

Return on Investment: The Greening Partnership has a proven track record of inputting roughly 3 dollars into restoration for every 1 dollar spent by Chatham-Kent.

The 2014 numbers are in ... **over \$560,000** in grant money has been generated for environmental restoration.

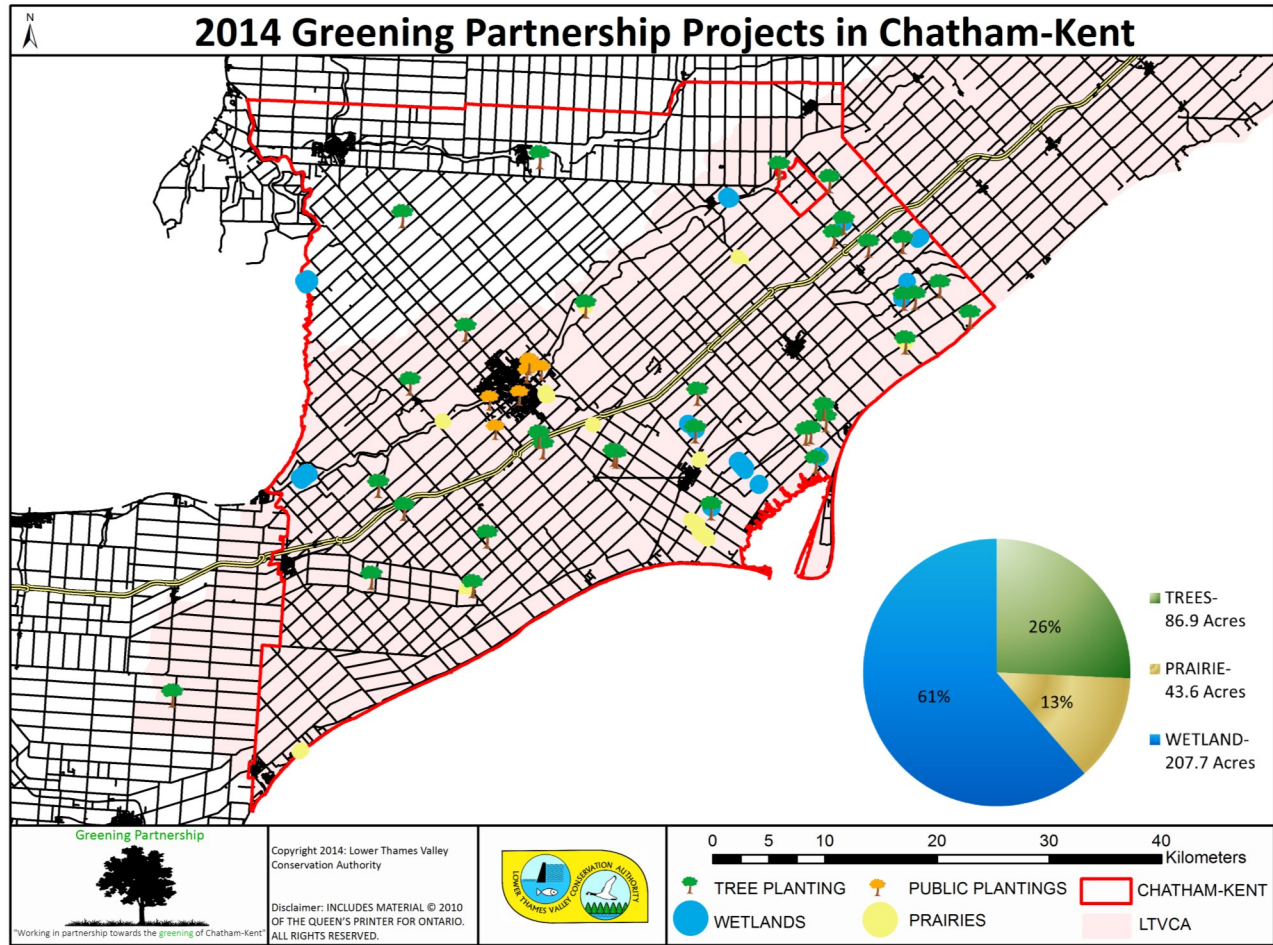
The Greening Partnership has applied for funds from various sources such as: National Wetland Conservation Program, Union Gas, Great Lakes Guardian Fund and Enbridge to name a few. Most of these funds will go to wetland restoration projects in our region.

Wetlands once covered a large portion of Chatham-Kent, mainly in the former Dover Township area. They are important rest areas for a variety of migratory waterfowl species that pass through this area. Wetlands also act as nature's filter by helping to control nutrient and sediment runoff, preventing algal blooms downstream in Lake Erie.

The Curran family of Thamesville understands the importance of habitat restoration and agreed to having 25 acres of their land converted to wetlands.



A wetland dedication event was held on October 29th. The Curran Family with representatives from Ducks Unlimited, Union Gas and The Municipality of Chatham-Kent attended.



NATURAL HERITAGE IMPLEMENTATION STRATEGY (NHIS)

The purpose of this Implementation Strategy is to identify how the Municipality of Chatham-Kent will work with all sectors of the community to maintain and enhance the natural heritage system within the municipality and, manage collectively, the greater ecological goods and services that are a benefit to all members of society.

As of July 3rd, 2014 Chatham-Kent council voted to implement the NHIS which saw the hiring of two new positions for the Greening Partnership: a Land Stewardship Technician and a Geographic Information Systems (GIS)/Communications Technician.

With an educational background in Fish and Wildlife Technology, *Lindsay Bennett* is the new Land Stewardship Technician with the LTVCA. Over the past nine years Lindsay has developed a broad range of skills in her work with various government and non-government

organizations. Her past experience as the Program Coordinator for the Norfolk Alternative Land Use Services (ALUS) program gave her an opportunity to work closely with private landowners.

Stephanie Allison is to assist staff with GIS and Communication needs. She has worked for various agencies such as Environment Canada, the Ontario Ministry of Agriculture and Food and Rural Affairs (OMAFRA) and the Town of Milton. Working at all levels of government; her experiences have positioned her well to provide GIS and communication expertise to the goals and objectives of the Greening Partnership.

IN THE COMMUNITY

The Greening Partnership must be active in engaging the community in order for the NHIS to succeed.



2nd Annual Friends of Rowsom Conservation Area volunteers.

FRIENDS OF ROWSOM – The 2nd Annual Friends of Rowsom Conservation Area was held on October 25th. Fifteen people from the Comber area came out to plant trees, work on the new trail and pick up litter. Over the last *three* years, \$30,000 has been spent for the improvement of this property.

Thank you to all volunteers, we look forward to seeing you next year! A special thanks goes to the Cranston Family for providing their gator and tractor for trail development.

LONG POINT WATERFOWL ASSOCIATION –

Long Point Waterfowl held its Inaugural Banquet on October 25th at the new Bradley Centre in Chatham. Over 150 people attended the fundraising dinner, where funds will be spent on waterfowl research on Lake St. Clair, including trapping mallard ducks to attach satellite transmitters. The Greening Partnership worked with Dr. Scott Petrie and the committee which raised over \$13,000 for the region.



TOMORROW'S GREENER SCHOOLS...TODAY

– This fall the Greening Partnership joined the Chatham-Kent Health Unit for the schoolyard tree planting initiative at seven schools in the area. A total of 51 trees were planted at these schools which will provide various health and environmental benefits.

CHILDREN’S WATER FESTIVAL AT C.M. WILSON CONSERVATION AREA - Greening Partnership staff assisted Festival organizers in early October by teaching students about the benefits of “buffer strips” on the landscape. As part of the exercise students planted native prairie plants along the edge of the pond at C.M.Wilson CA. Plug plants were sponsored by TD Friends of the Environment Foundation.



TD Friends of the Environment Foundation



Students learning about native prairie plants at the Water Festival.



Heritage tree plaque.

HERITAGE TREE PROJECT - To date over \$10,000 has been raised to create a Heritage Tree program, which will include a map of all designated trees, plaques, and a documentary movie for Chatham-Kent. Funders include: Scribendi Editing, Chatham-Kent Community Futures Development, Chatham Rotary Sunrise Club and the Greening Partnership.

Please let us know if you have a tree you think would be a good candidate for the project.

CORPORATE SPONSOR

The Greening Partnership utilizes Corporate Sponsors to subsidize restoration projects.

Enbridge has committed to funding the Greening Partnership for the next *five* years at \$75,000/year. The funds will be used to naturally restore *one* property in the East Kent area. The company would like to use a drone camera to fly over the site and document its

progression back to nature over the course of the project.



KEY PARTNERS

The Greening Partnership connects with partners for financial and technical support.



MINISTRY OF NATURAL RESOURCES AND FORESTRY (MNRF) - Working with the MNRF, several wetlands have been excavated in the Rondeau Bay area. Of particular interest is a 50 acre site which had *seven* separate ponds excavated and terraced to slow water down and capture sediment. Southern Ontario's natural areas have been greatly fragmented by development. This puts stress on all types of wildlife as they attempt to move between sites. This project is adjacent to two previous natural restoration sites, providing an important linkage to each other.



Dave Richards- from the Lake Erie Management Unit on the site.

ONTARIO NATIVESCAPE - For larger prairie plantings we partner with Ontario NativeScape. They provide certified seed, proper technical equipment and expertise for implementing this unique habitat.

DUCKS UNLIMITED (DU) CANADA - DU Canada continues to support the Greening Partnership with wetland restorations in Chatham-Kent. DU provides 25% of the cost of new wetlands as well as technical support and design.



(From Left to Right): Lindsay Buchanan from Ontario NativeScape, Greg Van Every from the Greening Partnership and Maylin Towler, co-op student from University of Guelph-Ridgetown Campus.



Darrell Randell- from Ducks Unlimited Canada at the Jeannette's Creek Wetland site.

ONTARIO MINISTRY OF AGRICULTURE, FOOD AND RURAL AFFAIRS (OMAFRA)

The Greening Partnership received funding from OMAFRA to hire an Agricultural Specialist, who will be focused on stewardship and education with the agricultural community.

Mike Buttenham, the new Agricultural Specialist at the LTVCA has been proactive with his involvement in the watershed. By attending outreach events he has had opportunities to introduce himself, talk about what projects he will be involved in and promote one of the newest funding platforms developed by the LTVCA, the *Agricultural Improvement Fund*. This is a brand new cost-share program available to qualifying farmers and landowners which has no deadline and is available year round. Goals of this program and other government administered programs, are to offer farmers significant cost-share savings. This will encourage Best Management Practices (BMP's) by protecting soil, water and air relied upon for bountiful harvests.

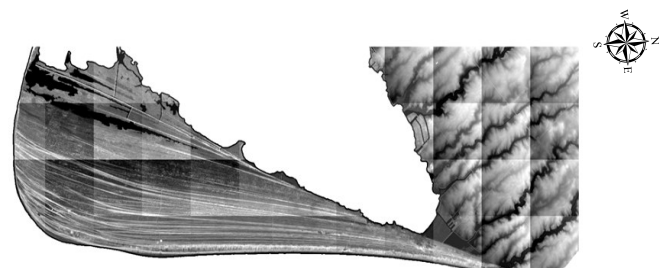
OMAFRA RESEARCH PROJECTS

As part of the OMAFRA grant it is required to complete research projects in the Lower Thames Valley Watershed priority zone. This research will help government officials and conservation area staff improve our understanding of the movement of nutrients and soil across the landscape. With the help of University of Waterloo professor Merrin Macrae and OMAFRA engineer Richard Brunke, a drainage tile monitoring device will be set up on a farm in Rondeau Bay. This research will track the amount of soluble phosphorus leaving drainage tiles and determine if less frequent, more intensive weather systems effect nutrient loss.

For more information please contact: Mike Buttenham at 519-354-7310 Ext 231 or Michael.Buttenham@ltvca.ca



Another project that is currently being worked on is the completion of a soil erosion model in the Rondeau Bay sub-watershed. The model takes variables such as climate, weather data and elevation. It will help determine the amount of soil loss/gain in the watershed and which areas would benefit from BMP's.



Digital Elevation Model (DEM) produced from LiDAR of Rondeau Bay

GREENING PARTNERSHIP

Greening Partnership Team
519-354-7310

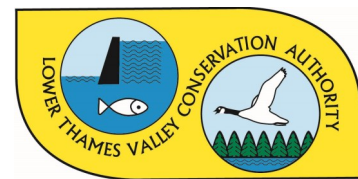


Randall Van Wagner- Environmental Project Coordinator ext. 230

Greg Van Every- Environmental Technical Assistant ext. 229

Lindsay Bennett- Land Stewardship Technician ext. 233

Stephanie Allison- GIS/Communications Technician ext. 234



LOOKING AHEAD TO 2015

1. Updating the Greening Partnership resources on the Lower Thames Valley Conservation Authority's new website
2. Working with CK Horticultural Society on "Tree of the Year" which will provide large stock trees to residents
3. Planting an additional 10,000 seedlings along the 401 with the Ministry of Transportation Partnership
4. Working with Chatham-Kent's Public Health Unit for the "Tomorrow's Greener Schools...Today" initiative

FUNDERS

Blenheim News Tribune
Chatham Daily News
Chatham Kent Community Foundation
Chatham This Week
Ducks Unlimited Canada
Enbridge
Environment Canada
Federal Economic Development Agency for Southern Ontario
GDF Suez
Kent Federation of Agriculture
Lower Thames Valley Conservation Foundation

Ministry of Agriculture, Food and Rural Affairs
Ministry of Natural Resources and Forestry
Municipality of Chatham-Kent
Ontario Power Generation
Rotary Club of Chatham
Scribendi Editing
Sun Media News
TD Friends of the Environment Foundation
The Ridgetown Independent
Trees Ontario
Union Gas, a Spectra Energy Company
Wheatley Two Creeks Association

CALL US TODAY! FUNDING AVAILABLE WE HAVE NATURAL RESTORATION INCENTIVES FOR:

WETLANDS



TALLGRASS PRAIRIES



WINDBREAKS



SPILLWAYS



BUFFER STRIPS



TREE PLANTATIONS



Lower Thames Valley Conservation Authority

100 Thames St.
Chatham, ON, N7L2Y8
www.ltvca.ca



For more information please contact us: 519-354-7310

Randall Van Wagner x 230
Randall.Vanwagner@ltvca.ca

Greg Van Every x 229
Greg.Vanevery@ltvca.ca

Lindsay Bennett x 233
Lindsay.Bennett@ltvca.ca