

C.M. Wilson Conservation Area Facilities at a Glance!

- 30 hectare conservation area
- over 100 camp sites for families open Victoria Day to Thanksgiving, hydro and water serviced
- daily, weekly and seasonal camping rates
- fully serviced, accessible washrooms with showers
- trailer dumping station
- group camping for scouts and guides
- barn pavilion with stone fireplace for year round event rental
- weddings and company picnics
- man-made lake
- ice skating
- cross-country skiing (ungroomed trails)
- toboggan hill
- adventure playground
- picnic areas with tables
- fish and windsurf
- McKinlay Woodlands Memorial Forest
- Carolinian forest and wetlands with excellent bird and wildlife watching opportunities
- nature trails and boardwalks (wheelchair accessible)
- curriculum based conservation education programs for elementary and secondary school students and youth groups
- park open for day use year round



'The Lower Thames Valley Conservation Authority (LTVCA) is a watershed-based partner, working with the local community providing services and information to efficiently protect and enhance the environment for present and future generations.'

What is a Conservation Authority?

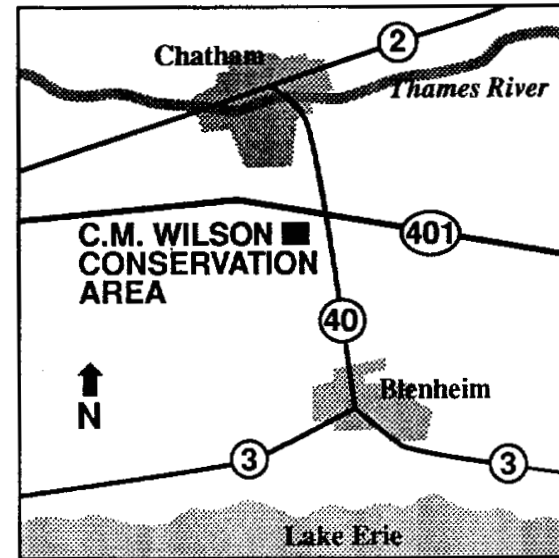
A Conservation Authority (CA) is an autonomous corporate body established under the CA Act of Ontario. CAs manage renewable natural resources on a watershed basis. Projects are initiated locally by the CA's member municipalities to meet regional conservation needs. CAs work in partnership with their local member municipalities, the Provincial and Federal Government Ministries and Departments, special interest groups, businesses, corporations and individuals. The objectives of a CA are to establish and undertake, in the area over which it has jurisdiction, a program designed to further the conservation, restoration, development and management of natural resources. There are 36 Conservation Authorities established throughout Ontario.

What Does a Conservation Authority Do?

Conservation Authorities study and investigate the watershed and determine a program whereby the natural resources of the watershed may be conserved, restored, developed and managed. A watershed refers to an area drained by a particular watercourse and its tributaries.

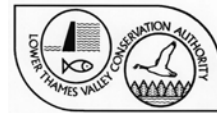
What is the Area of the Lower Thames Valley Conservation Authority?

The Lower Thames Valley Conservation Authority has jurisdiction over the watersheds of all streams which drain into the Thames River from the village of Delaware to Lake St. Clair. Its southern boundaries extend to the shore of Lake Erie. This area of jurisdiction covers over 3,275 square kilometres (1,264 square miles) and includes 10 member municipalities.



Directions

C.M. Wilson Conservation Area is located 8.5 km south of Chatham in the Municipality of Chatham-Kent at the junction of Highways 401 and 40 (interchange 90). Take Highway 40 south to Horton Line. Turn west onto Horton Line. Cross the railroad tracks, turn immediately north onto Fargo Road. C.M. Wilson Conservation Area is located at 21799 Fargo Road.

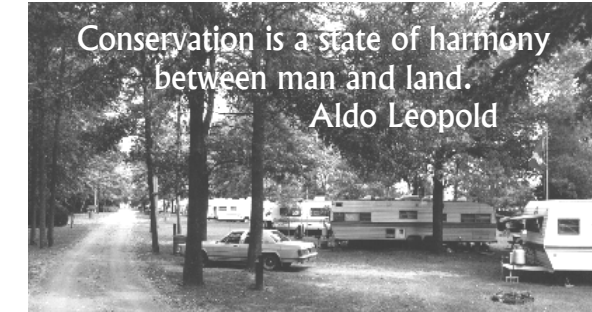


For Information

C.M. Wilson Conservation Area
Lower Thames Valley Conservation Authority,
100 Thames St., Chatham, ON N7L 2Y8

Tel: 519 354-7310 or 519 351-3919 (summer)
Fax: 519 352-3435 **E-mail:** admin@ltvca.ca
Website: www.ltvca.ca

C. M. Wilson Conservation Area



C. M. Wilson Conservation Area is located 8.5 km south of Chatham. The Lower Thames Valley Conservation Authority acquired this 30 hectare property in 1967. The park was named after a former Chair of the Board of Directors, Clarence Michael Wilson.



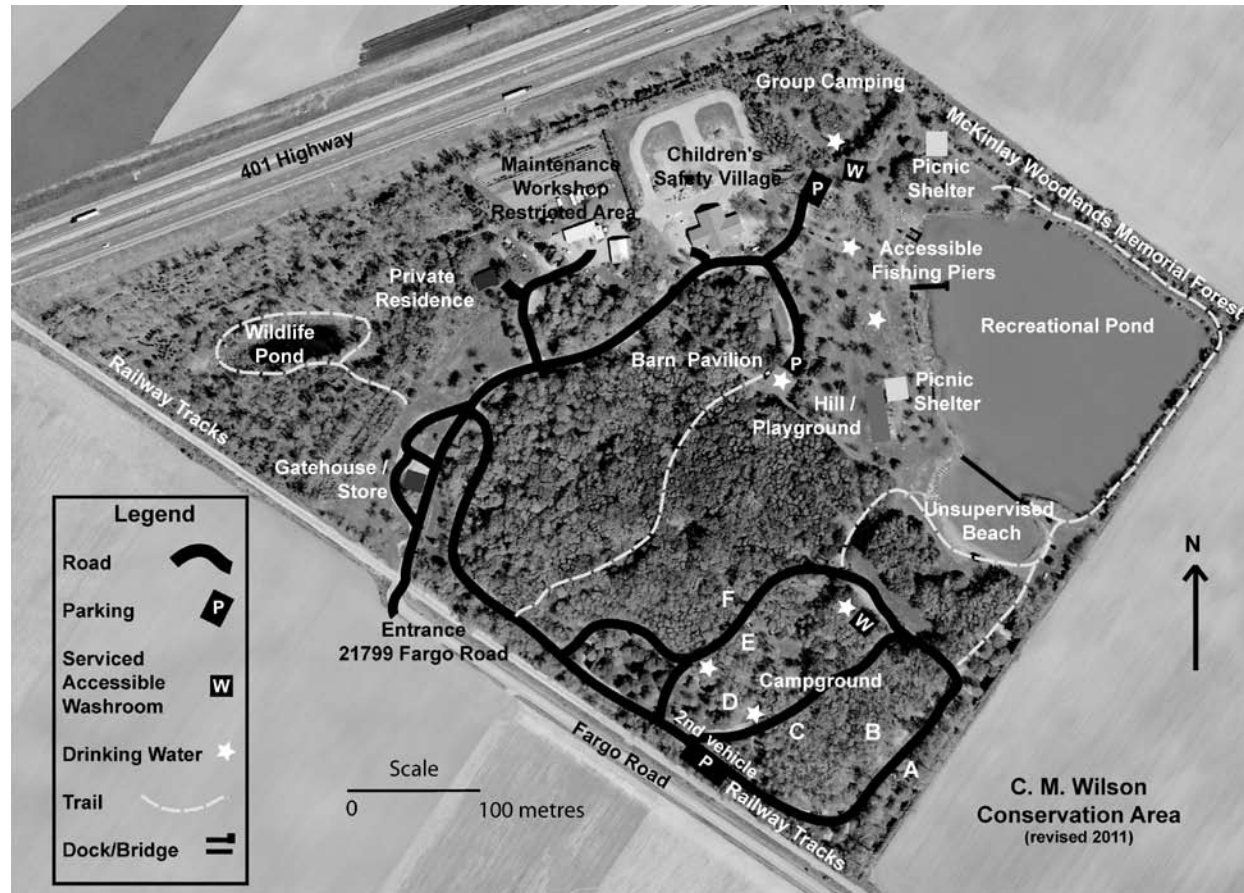
Picnics, Barbecues, Day Use

Open year-round from 8 a.m. to sunset daily, visitors can enjoy a variety of outdoor activities. A man-made lake offers fishing for bass, pike, catfish and bluegill and a place to put in your canoe or windsurfer. Picnic areas are nearby with tables. For nature lovers, the Carolinian forest and wetlands abound with birds and wildlife. Wheelchair accessible trails and boardwalks wind through the woods along the lakeshore. A barn pavilion may be rented for events year round. Its stone fireplace and barbecue, washrooms, kitchen and hydro services make the 'barn' a great spot for those 'special get-togethers'.



Family or Group Camp in a Natural Setting!

Camp at one of over 100 sites at C.M Wilson Conservation Area, ideal for tents and trailers! Many sites are serviced with hydro and water. Reservations are required for all group camping such as Boy Scouts and Girl Guides. Sites are open from Victoria Day to Thanksgiving. Soft drinks and snack foods are available at the gatehouse over the summer months. Washrooms are fully serviced with showers and there is a trailer dumping station on site.



Conservation Education

Curriculum based conservation programs for secondary and elementary school students are offered every spring and fall in the natural habitats at C.M. Wilson Conservation Area. Conducted by Conservation Authority staff, students participate in hands-on outdoor activities and study aquatic ecosystems, forestry, wildlife, plants, birds, natural habitats and communities, soil and insects.



McKinlay Woodlands Memorial Forest

Supported by McKinlay Funeral Homes Ltd. and the Lower Thames Valley Conservation Foundation, hundreds of trees are planted in memory of loved ones each year. An annual dedication service is held every fall. Family and friends are invited to plant ceremonial trees in the McKinlay Woodlands overlooking the lake.

